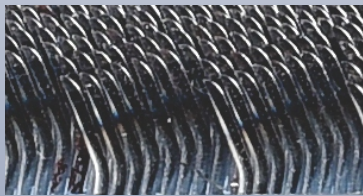
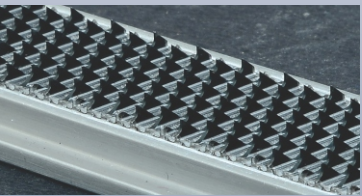


UCC

CARD CLOTHING



**Reliable
Carding
Solutions**

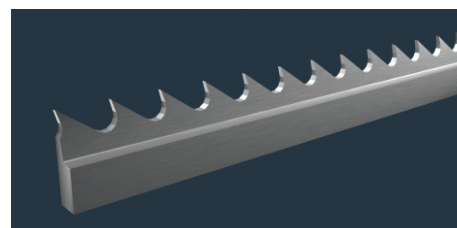
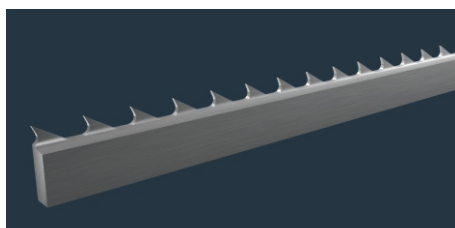
METALLURGY

- UNISTAR** : Made from NANO ALLOY STEELS for super high production cards.
UNICHROME : Made from CHROME VANADIUM STEELS for high production cards
UNICARB : Made from Special High Tenacity CARBON STEELS for medium speed cards.

CYLINDER WIRES

S.No	Type	Height	Rib	Angle	PPSI
1	CR 2035 x 0.4 - 1080	2.0	0.4	35	1080
2	CR 2040 x 0.4 - 1080	2.0	0.4	40	1080
3	CT ₂ 2030 x 0.5 - 990	2.0	0.5	30	990
4	CP 2035 x 0.4 - 960	2.0	0.4	35	960
5	CP 2040 x 0.4 - 960	2.0	0.4	40	960
6	CR 2025 x 0.5 - 860	2.0	0.5	25	860
7	CR 2030 x 0.5 - 860	2.0	0.5	30	860
8	CR 2035 x 0.5 - 860	2.0	0.5	35	860
9	CR 2040 x 0.5 - 860	2.0	0.5	40	860
10	CQ 2025 x 0.5 - 806	2.0	0.5	25	806
11	CR 2030 x 0.6 - 720	2.0	0.6	30	720
12	CR 2530 x 0.5 - 860	2.5	0.5	30	860
13	CP 2530 x 0.5 - 760	2.5	0.5	30	760
14	CR 2530 x 0.6 - 720	2.5	0.6	30	720
15	CR 2525 x 0.6 - 720	2.5	0.6	25	720
16	CR 2520 x 0.6 - 720	2.5	0.6	20	720
17	CP 2520 x 0.7 - 630	2.5	0.7	20	630
18	CR 2520 x 0.7 - 620	2.5	0.7	20	620
19	CR 2820 x 0.7 - 620	2.8	0.7	20	620
20	CP 2815 x 0.8 - 505	2.8	0.8	15	505
21	CO 3210 x 0.9 - 400	3.2	0.9	10	400

Unimax - 860 PPSI / 960 PPSI



DOFFER WIRES

S.No	Type	Height	Rib	Angle	PPSI
1	DN 4030 x 0.85 R - 390	4.0	0.85	30	390
2	DN 4030 x 0.85 RC - 390	4.0	0.85	30	390
3	DK 4035 x 0.8 UC - 320	4.0	0.8	35	320
4	DL 4030 x 1.0 RC - 280	4.0	1.0	30	280
5	DM 4730 x 1.0 - 340	4.7	1.0	30	340
6	DM 5030 x 0.9 - 340	5.0	0.9	30	340

INTERLOCKING LICKER-IN WIRES

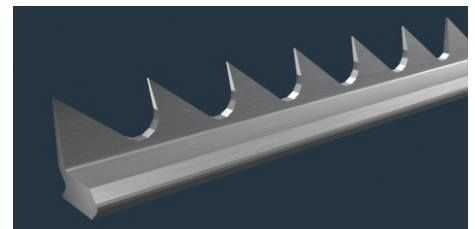
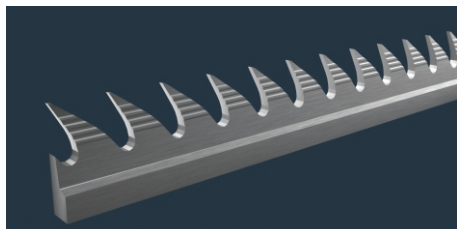
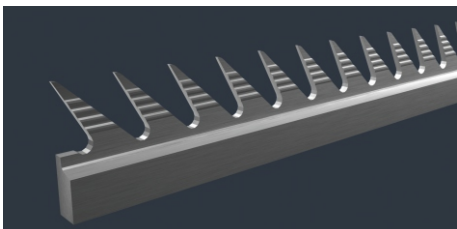
S.No	Type	Height	Rib	Angle	TPI
1	LV8 - D5005 - 4T	5.0	V8	5	4.0
2	LV8 - E5010 - 5T	5.0	V8	10	5.0
3	LV8 - E5000 - 5T	5.0	V8	0	5.0
4	LV12 J2-5010 - 9.5T	5.0	V12	10	9.5
5	LV16 K-5020 - 10T	5.0	V16	20	10.0
6	LV16 N-5020 - 13T	5.0	V16	20	13.0

GROOVED LICKER-IN WIRES

S.No	Type	Height	Rib	Angle	TPI
1	GLC 5500 - 3T	5.5	1.1to1.6	0	3
2	GLD 5505 - 4T	5.5	1.1to1.6	5	4
3	GLE 5510 - 5T	5.5	1.1to1.6	10	5

OPEN END SPINNING WIRES

S.No	Type	Height	Rib	Angle	TPI
1	OE-OK 37	3.6	0.9	-10	4.5
2	OE-OK 40	3.6	0.9	25	9.5
3	OE-OB 20	3.6	0.9	25	12



BLOWROOM BEATER WIRES TRUTZSCHLER & TRUMAC

S.No	Type	Height	Rib	Angle	TPI
1	TR13 & 14	7.5	V6	10	1.5
2	LV8 D6020	6.0	V8	20	4
3	LV6 C6020	6.0	V6	20	3

BLOWROOM BEATER WIRES RIETER & LMW

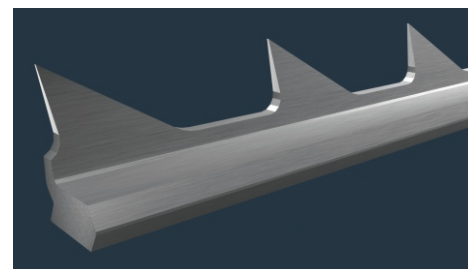
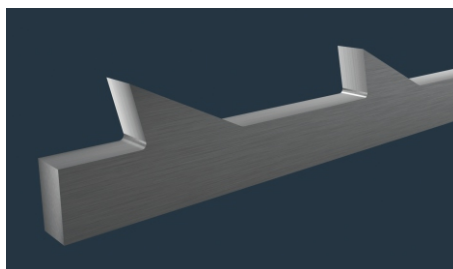
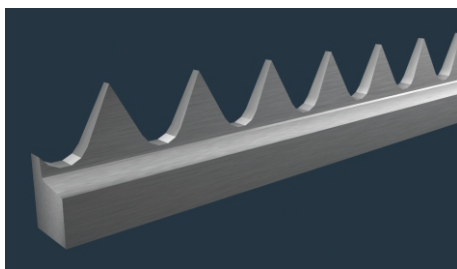
S.No	Type	Height	Rib	Angle	TPI
1	BR 10/0	10	2.5	0	2.5
2	BR 10/10	10	2.5	10	2.5
3	BR 20/0	10	2.5	0	1.5
4	BR 20/10	10	2.5	10	1.5

BORDER WIRES

S.No	Type	Height	Rib	WIDTH
1	Steel Border wire (4.0 X 1.0)	4.0	1.0	0.0
2	Anti Flock Border Wire - 1501	3.2	1.2	2.5
3	Anti Flock Border Wire - 1504	6.5	0.5	4.0

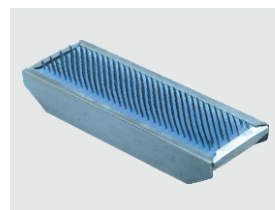
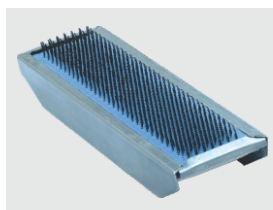
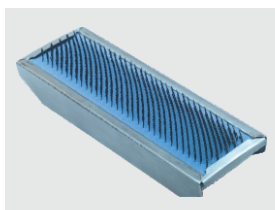
STRIPPER ROLLER & FEED ROLLER & CHUTE BEATER WIRES

S.No	Type	Height	Rib	Angle	TPI
1	Stripper wire TR12(SG2 4028x1.8)	4.0	1.8	-28	7.5
2	Stripper wire (H3530 x 1.0)	3.5	1.0	-30	8.0
3	Feed Roller wire FV6-TR5	5	4.2	15	2.0
4	Chute Beater Wire-TR11	5.5	V6	0	4.5



FLAT TOPS

Type	Specifications	PPSI	Suitable For	Features
PG Series	PG 330	330	Cotton- coarse, medium, combed & fine counts	<ol style="list-style-type: none"> 1. Variable density - low density at material entry & higher density at material exit. 2. Better elimination of short fibres and neps through flat waste.
	PG 430	430		
	PG 530	530		
<i>stilo</i>	<i>STILO</i> 580	580	Cotton - medium, combed & fine counts	Tops with special setting pattern suitable for high production cards. Gives best NRE %
Uno Series	UNO 310	310	Cotton & PC Blends (Polyester & Cotton)	<ol style="list-style-type: none"> 1. Uniform density - Flat tops wire PPSI uniform across the width of flat top. 2. Unique setting pattern of flat tops provides better fibre trapping. Better elimination of short fibre & neps at high production rates
	UNO 410	410		
	UNO 510	510		
	UNO 550	550		
Uno-S Series	UNO - S 300	300	100% polyester, Polyester & viscose blends, 100% viscose, MODAL & TENCEL fibre.	<ol style="list-style-type: none"> 1. Synthetic tops - Tops with angle suitable for processing synthetic fibres. 2. Reduces resistance in carding zone there by reduces static electricity and prevents card loading. Hightensile wires used to with stand load.
	UNO - S 400	400		
	UNO -S 500	500		
Recto Series	RECTO 330	330	100% Polyester, Acrylic, Recycled waste & bleached cotton.	<ol style="list-style-type: none"> 1. Rectangular wire with no knee bend - Re grinding not required. 2. Semi rigid tops - Extraction of low flat waste. 3. Suitable for very coarse micronaire / denier fibres and sliver hanks.

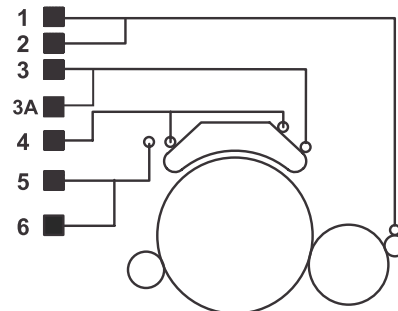


- ❖ Flat tops pins made out of **Special grade oil tempered steel with high fatigue properties.**
- ❖ Tips are extra hardened in advance **HAQ** - method (Hydrogen fuel flaming and cryogenic quenching).
- ❖ This advance treatment keeps the flat tops naturally clean, due to smooth surface finish.

FILLET CHART

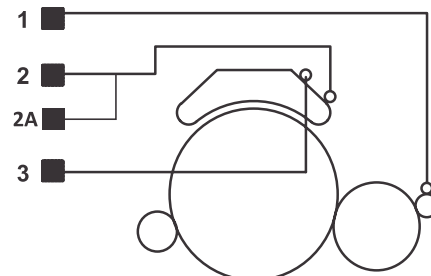
LMW- LC100 / 300 / 300A / 300AV3 / 300AV4 / 333 / 361 / 363 CARDS

S.No	Description	Specification	Qty / Card
1	Zig-Zag No.10 (LC 100)	8.6 mtrs x 38 mm	8.6 mtrs
2	CRC CF50 (LC300 to 363)	15.0 mtrs x 17.5 mm	15.0 mtrs
3	Flat clearer roller clothing	1050 x 19 mm	2 pcs
3A	Flat stripping (26.5 mm ht)	11.5 mts x 40mm	11.5 mtrs
4	Clearer rod clothing	1010 x 15 mm	1 pc
5	Flat stripping (LC 100)	1030 x 47.5mm	1 pc
6	CRC with clips (LC300 to 363)	1010 x 58.5mm	1 pc



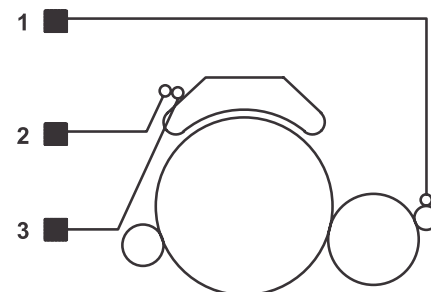
LAKSHMI RIETER C 1/1 , C 1/2, C1/3 & TEXTTOOL-TC360,450 & SHANTHI SC2 CARDS

S.No	Description	Specification	Qty / Card
1	Clearer roller clothing	11 mtrs x 28 mm	11.0 mtrs
2	Flat clearer roller clothing	1050 x 19 mm	2 pcs
2A	Flat stripping (26.5 mm ht)	11.5mtrs x 40mm	11.5mtrs
3	Clearer rod clothing	1010 x 15mm	1 pc



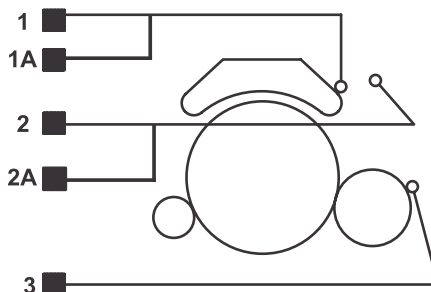
TRUTZSCHLER- DK 715,740, 760,780,800,803, 903 TC SERIES 03,05,5/1,5/3,07,08,11 CARDS

S.No	Description	Specification	Qty / Card
1	Doffer cleaning fillet TR AP No.26	15.0 mtrs x 20 mm	15.0 mtrs
2	Cleaning fillet TR DP 18 - 1	10.5 mtrs x 28 mm	10.5 mtrs
3	Stripping fillet TR DS 609	9.0 mtrs x 40 mm	9.0 mtrs



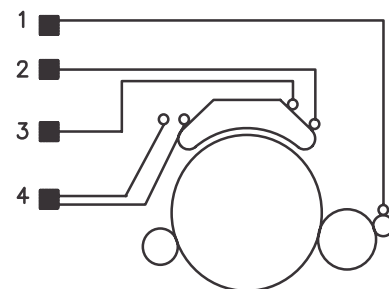
CROSROL MK 4, MK5, MK 6 & MK 7 SERIES CARDS

S.No	Description	Specification	Qty / Card
1	Cleaning Flat Fillet (8 rows)	1022 x 32mm	1 pc
1A	Stripping Fillet DS - 609 (MK6)	11.0 mtrs x 40mm	11.0 mtrs
2	Cleaning Flat Fillet (10 rows)	1022 x 32 mm	1 pc
2A	Cleaning Fillet DP 18 - 1 (MK6)	12.5 mtrs x 28mm	12.5 mtrs
3	Dicky Fillet	16.0 mtrs x 20mm	16.0 mtrs



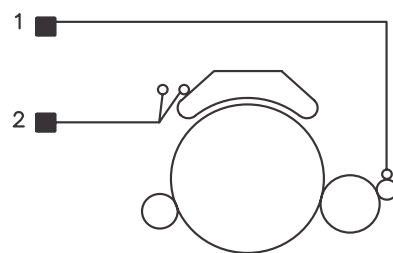
RIETER C4 CARDS

S.No	Description	Specification	Qty / Card
1	Zig-Zag No.10	7.5 mtrs x 40mm	7.5 mtrs
2	Clearer rod clothing	1010 x 15mtrs	1 pc
3	Flat Stripping	1030 x 47.5 mm	2 pcs
4	Special CRC	(12mtrs x 28mm x 7.5mm)	12 mtrs



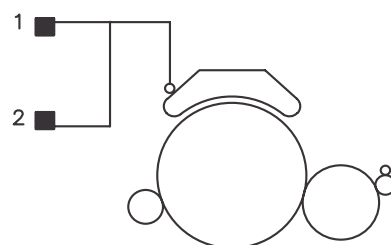
RIETER C 50 CARD

S.No	Description	Specification	Qty / Card
1	Clearer roller clothing CF50	13 mtrs x 28mm	13.0 mtrs
2	Flat Stripping	1030 x 47.5 mm	2 pcs



RIETER C 60 CARD

S.No	Description	Specification	Qty / Card
1	Cleaning fillet UFB60(H=26mm)	1535 x 34mm	1pcs
2	Stripping fillet UFB61(H=11mm)	1545 x 34mm	1pcs

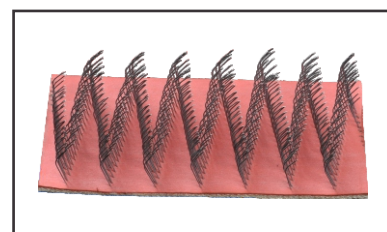


RIETER C 70 CARD

S.No	Description	Specification	Qty / Card
1	Cleaning fillet TR DP 18-1	15mtrs x 28mm	15 mtrs
2	Stripping fillet TR DS 609	14mtrs x 40mm	14 mtrs

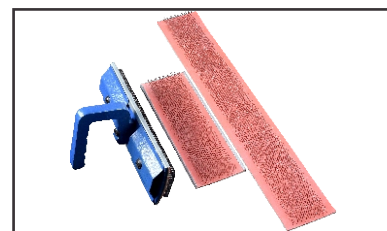
STANDARD FILLETS

S.No	Description	Specification	Qty / Card
1	Metallic stripping fillet	14mtrs X 40.0 mm	14 mts
2	Burnishing fillet	14mtrs X 40.0 mm	14 mts
3	Zig zag flat cleaning fillet	11.5 mtrs x 40 mm width	11.5 mts



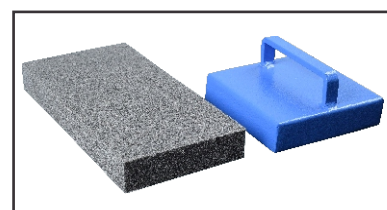
HAND CARD STRIPPING FILLET

S.No	Description	Specification	Qty / Card
1	Hand card stripper with clips	260 x 64 x 17 mm	1
2	Handle for hand card stripper	-	1
3	Hand card stripper (use with wooden handle)	560 x 64 x 17 mm	1



BURNISHING PAD & HANDLE

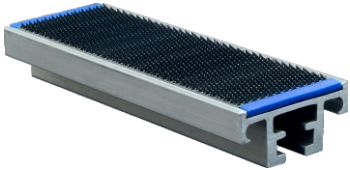
S.No	Description	Specification	Qty / Card
1	Burnishing pad	200 X 100 X 25 mm	1
2	Handle for burnishing pad	-	1

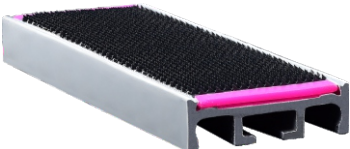


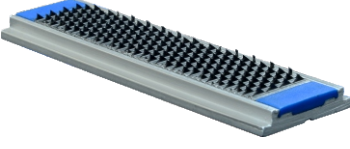
STATIONARY FLAT TOPS-UCC *Stilo* SERIES

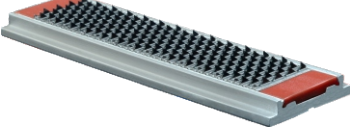
Salient Features of SF Tops


- Available for all make and model cards
- Periodical Replacement of SF Tops Enhance Cylinder and Flat Top Life.
- Stationary Flat Metallic wires are made out of imported NANO ALLOY STEELS
- Latest Tooth Geometry and angle Suitable for Super High Production Cards (up to 100kg/hrs)

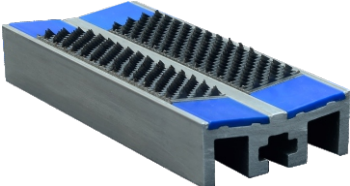
Type		Card Make	Suitable For	PPSI
A		LMW Trutzschler	<ul style="list-style-type: none"> ● LC300, LC300A (above Lickerin SFL) Cards. ● Under Lickerin Strip LC 333/LC 363 Cards. ● DK 760 card (with Aluminium Bare Flat). ● DK 780, DK803 cards. 	70, 90, 100 150, 250, 350 450, 550, 650

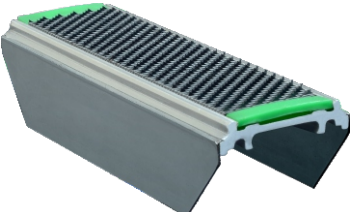
Type		Card Make	Suitable For	PPSI
B		Trutzschler Crosrol Chinise	<ul style="list-style-type: none"> ● DK 740,760 (Cards with Cast Iron Bare Flat card) DK 800,903, TC-03,05,5/1,5/3, 07,08, 11 cards ● MK-4,5,6,7 cards ● FA 203A, FA290C, FA225, JWF1203, JFA226E, JFA228A, FA231 Cards ● ICC and ECC C' Cleaner Conversion Rieter and LMW Cards ● ICC Under lickerin Segment strips 	70,90,100,150, 250,350,450, 550,650

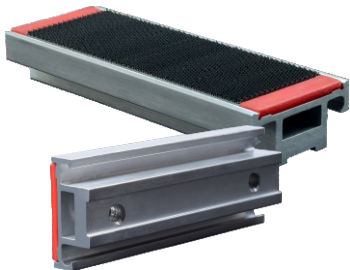
Type		Card Make	Suitable For	PPSI
C		Trutzschler Rieter	<ul style="list-style-type: none"> ● Under lickerin Segment-DK740, 760, 780, 800 Cards. ● Under lickerin Segment - C10, 50, 51 Cards (LCC & Unirols & Lakzer - Segment) ● C1/2,C1/3,LC100, LC300, LC300AV3 TC360, TC450,SC2 Cards. ● CVT - FD6 Blowroom - S.F. Tops (1200mm) 	70, 90


Type		Card Make	Suitable For	PPSI
D		Rieter	<ul style="list-style-type: none"> ● C60-Uniflex Carding Segment 40 PPSI (FD 4) 	40

Type		Card Make	Suitable For	PPSI
E		Rieter	<ul style="list-style-type: none"> ● C4 Card 	70, 90

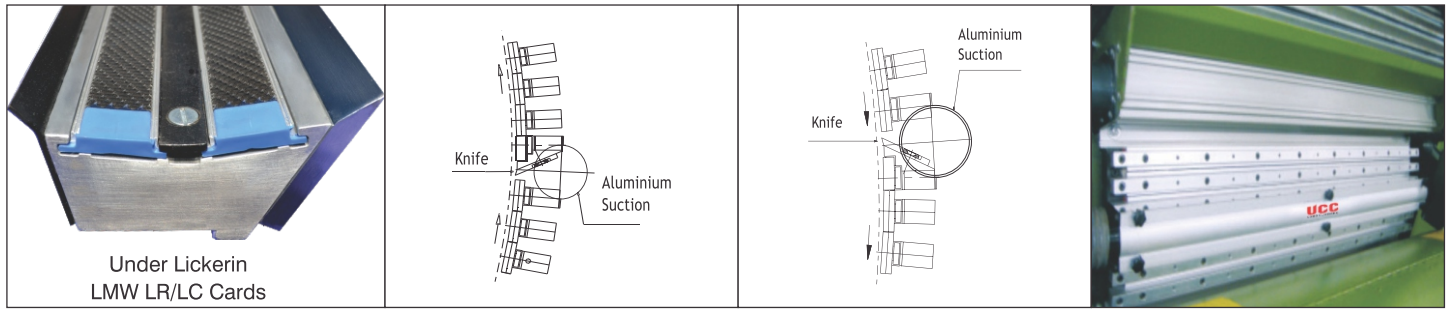
Type		Card Make	Suitable For	PPSI
F		Trutzschler	<ul style="list-style-type: none"> ● TCO3, 05, 5/1, 5/3, 07, 08 Cards Under lickerin Segment 	70

Type		Card Make	Suitable For	PPSI
G		Crosrol Trumac Rieter Chinise	<ul style="list-style-type: none"> ● MK4, MK5 Cards ● DK715, DK740 Cards ● C4 Card ● FA186F, FA20A, FA201B Cards 	100, 150, 250 350, 450 550, 650

Type		Card Make	Suitable For	PPSI
H		LMW	<ul style="list-style-type: none"> ● LC300A, 300AV3, 300AV4, 333, 361, 363 LC300, 300A(Above Doffer SFD) ● LCC-'C' Cleaner-C1/2,C1/3,LC100,TC360, TC450, SC2 ● LCC-'C' Cleaner-DK715, 740, 760, 780, C4, C10 ● All Unirols & Lakzer - Conversion 	70, 90, 100, 150, 250, 350, 450, 550, 650

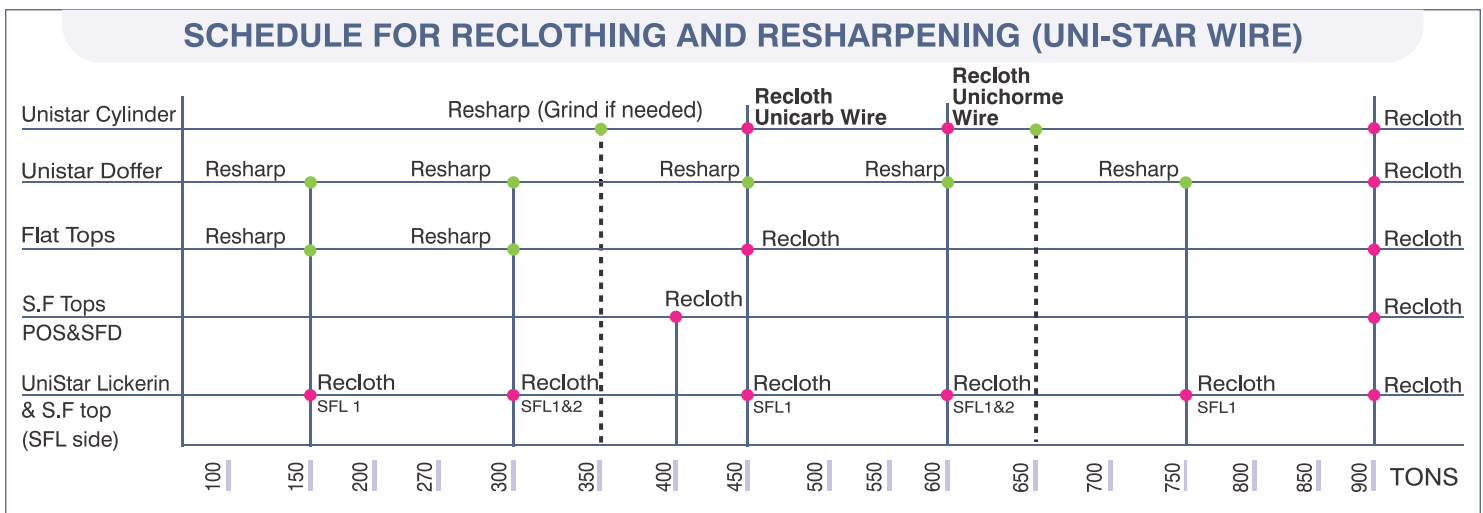
PPSI COLOR CODE	PPSI COLOR CODE	PPSI COLOR CODE
 70 Blue	 150 Green	 450 Black
 90 Dark Blue	 250 Pink	 550 Orange
 100 Yellow	 350 Blue	 650 Red

EXTENDED STATIONARY FLAT SYSTEM



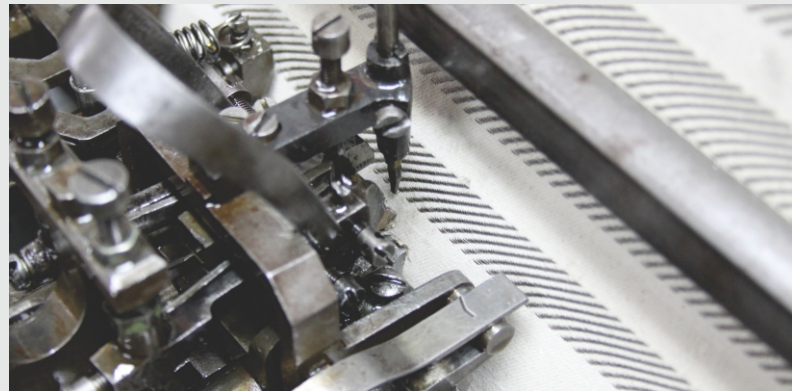
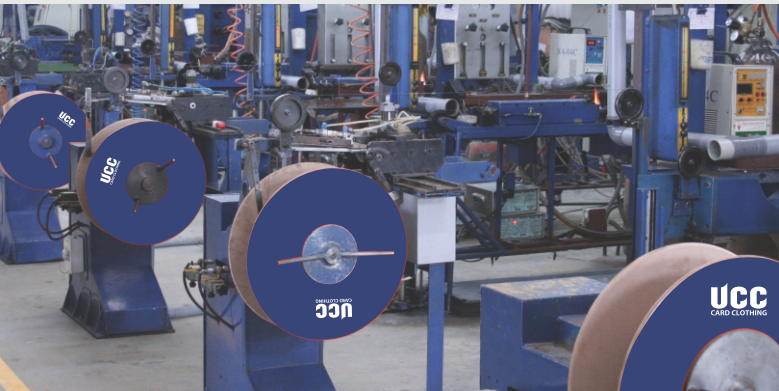
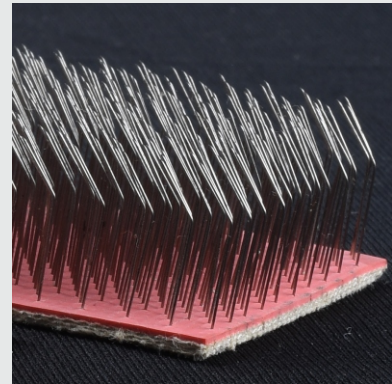
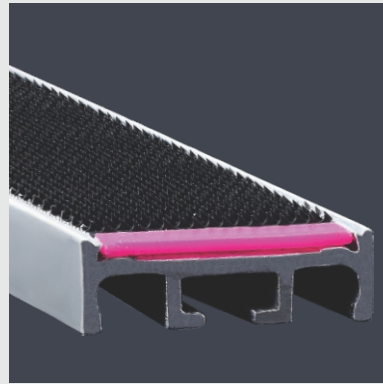
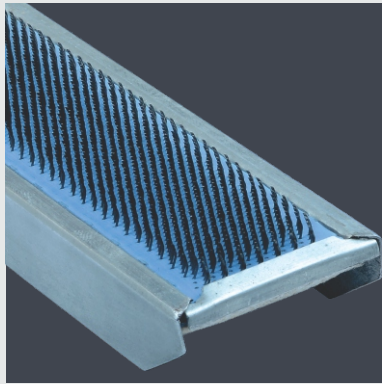
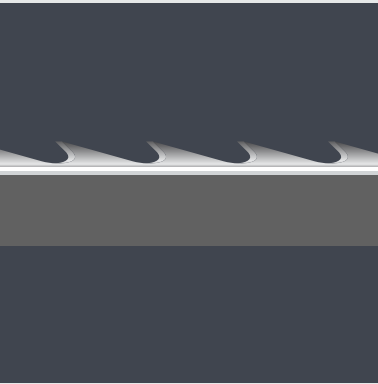
3 Flat (SFL)	- C1/1, C1/2, C1/3, LC100, TC360, SC2.
3 Flat+ 1K (SFD)	- C1/1, C1/2, C1/3, LC100, TC360, SC2.
5 Flat + 1K (SFD)	- DK715, DK740, DK760 (Cast Iron Bare Flat).
6 Flat + 1K (SFD)	- C1/1, C1/2, C1/3, LC100, LC300, LC300A, LC300AV3, TC360, SC2, DK780, DK760 (Aluminum Bare Flat).
6 Flat + 1K (SFL & SFD)	- DK 803.
7 Flat + 1K (SFL)	- DK715, DK740, DK760 (Cast Iron Bare Flat).
8 Flat + 1K (SFL)	- DK780, DK800, DK760 (Aluminum Bare Flat) Rieter - C4, C10.

CARD CLOTHING MAINTENANCE SCHEDULE



Note

- Initial Grinding is Recommended for Doffer Wire.
- Above Chart is Guide Line Only.
- Intervals can be decided as per mill condition.
- For Viscose processing - 10% additional life expected
- For 100% Polyester / dyed synthetic 15 % reduction in life expected.
- SFL1 - Bottom Beam, SFL 2 - Middle & Top Beam.



UCC
CARD CLOTHING

UNISPIN CARD CLOTHING INDIA Pvt. Ltd.,

S.F. No:362/4, Angammal Layout,
Anna Nagar Extn., Neelikonampalayam,
Coimbatore - 641 033. Tamilnadu, India.

Mobile : +91 99524 20282
Email : sales@unispincardclothing.com
Website : www.unispincardclothing.com